

## Champagne Tourney Rhodes 2021

The Tourney is divided in 2 sections (with separate awards) :

A . ProofGames B. Any other kind of Retro problems

Theme (in honour of Nikita Plaksin for his 90<sup>th</sup> birthday) :

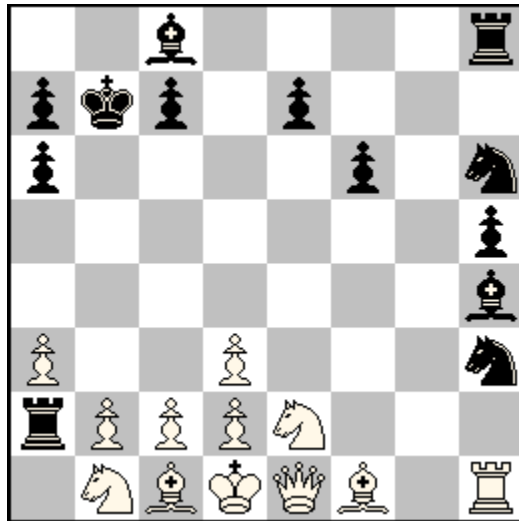
The same piece captures at least 2 promoted pieces.

(capturing piece is a Pawn in the examples

but any other kind of capturing piece is accepted)

Example for Section A :

### Nikita PLAKSIN, Michel CAILLAUD 1° HM feenschach 1982 (v)



SPG 25,5

(12+13) C+

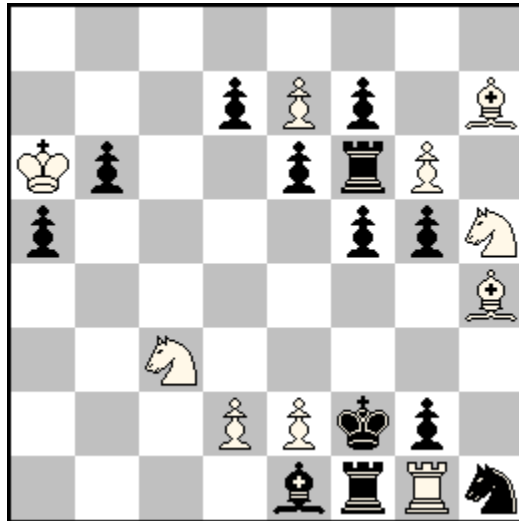
1.h4 Sa6 2.h5 Sc5 3.h6 S6 4.hxg7 h5 5.g4 Sh6 6.g8=L Lg7  
 7.g5 Lf6 8.g6 Lh4 9.g7 f6 10.Lb3 Sg5 11.g8=L Sh3 12.Lg4 d5  
 13.a3 dxc4 14.Ta2 Dd3 15.éxd3 Ld7! 16.Ké2 0-0-0 17.f4 Tdg8  
 18.f5 Tg6 19.fxg6 çxb3 20.g7 bxa2 21.g8=L a1=T  
 22.Lç4 Ta2 23.La6 bxa6 24.Dé1 Kb7 25.Kd1 Lç8 26.S62

bxa2, 21.g8=L, bxa6 are not thematic

Example for Section B :

**Nikita PLAKSIN**

**1°-2° Prix e.a., Shakhmatny Vestnik 1993**



History of black Pg2 ? (10+13)

-1.Sg3-h5+ **f3×Lg2** -2.Kb5-a6 **é4×Lf3** -3.Ka4-b5 **d5×Dé4**  
-4.Dé5-é4 a6-a5 -5.Db8-é5 d6-d5 -6.**b7-b8=D** a7-a6 -7.a6×D(L,S)b7  
then : Lf3 to ç8, **ç7-ç8=L**, ç6-ç7, ç5-ç6, Lg2 to ç8, **ç7-ç8=L**, ç6-ç7,  
**ç7×Dd6**, Dd6 to h8, **h7-h8=D**, h6-h7, h5-h6, h6×g5 and position unlocks.

black Pg2 captured 4 promoted pieces (only 2 are needed for the tourney).

**Pç7×Dd6-d5×Dé4×Lf3×Lg2**

Fairy conditions (but not fairy pieces) allowed in both sections.

Maximum 2 entries per composer per section (collaboration counts for 1 full entry).

Maximum 1 non computer tested entry per composer in section A

Entries to the director Eric Pichouron, by Wednesday 20th October 20:00 PM

e-mail : [chess.champagne2021@gmail.com](mailto:chess.champagne2021@gmail.com)

who will transmit problems to the judge Michel Caillaud in anonymous form.

Prizes in each section :

subscription to Phénix 2022 for the first place, Winchloé light for the second place

Thanks to Laurent Riguet and Christian Poisson for providing the Prizes.

Phénix, created by Denis Blondel, now edited by Laurent, is the french problem magazine, with retro section run by Thierry Le Gleuher, and regularly published retro articles.

Among others :

2020 : a top class article by Pascal Wassong on the genesis of a classical retro

2021 : the quest for the Longest exact Proofgame by Thierry Le Gleuher (410,5 moves)

<http://www.phenix-echecs.fr/>

Winchloé light, developed by Christian, is a problem database, updated every month (now 823512 problems).

The most complete database for Proofgames (now 8462 of them).

<http://winchloe.free.fr/>